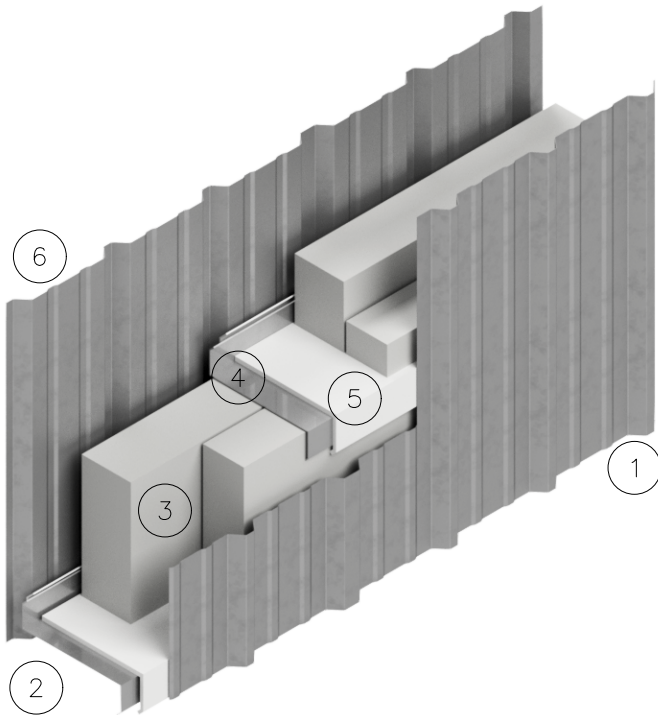


**LEGEND - Nonbearing  
Interior Partition Wall**



**1-HOUR FIRE-RESISTANCE RATING - ULC W610**

Fire side at either side of partition

- 1) 24ga (0.61mm) LINER PANEL
- 2) U CHANNEL OR GIRT SUPPORT
- 3) MINERAL WOOL INSULATION
- 4) GIRT STRUCTURAL SUPPORT
- 5) CERAMIC FIBRE STRIP
- 6) 24ga (0.61mm) LINER PANEL

**2-HOUR FIRE-RESISTANCE RATING - ULC W611**

Fire side at either side of partition

- 1) 22ga (0.76mm) LINER PANEL
- 2) U CHANNEL OR GIRT SUPPORT
- 3) MINERAL WOOL INSULATION
- 4) GIRT STRUCTURAL SUPPORT
- 5) CERAMIC FIBRE STRIP
- 6) 22ga (0.76mm) LINER PANEL

**INTERIOR PARTITION WALL**

**THE FIREGUARD WALL SYSTEM IS BASED ON A ULC DESIGNATED NON-LOAD BEARING FIRE RATED WALL SYSTEM DESIGNED WITH THE STEEL CLADDING AND ENCLOSED MINERAL WOOL INSULATION TO PROVIDE 1- OR 2- HOUR FIRE RATED INTERIOR PARTITION WALL. Test based on CAN/ULC-S101-14-REV3 Standard Fire Endurance Tests for Building Construction Material.**

**ONE-HOUR FIRE RATED WALL ASSEMBLY (MEETS ULC DESIGN NO. W610)**

- \* 24 GAUGE (0.61mm) MINIMUM LINER PANEL WITH MASTIC SEALER TAPE ON SEAM LINES AND ENDS, C/W TEK SCREWS AT 12" (305mm) O.C. AND STITCH SCREWS AT 12" (305mm) O.C.
- \* GIRT STRUCTURAL SUPPORT MINIMUM 18ga (1.22mm) NOMINAL THICKNESS.
- \* GIRT SPACING OF 48" (1220mm) TO MATCH MINERAL WOOL BATT SIZE OR TO A MAXIMUM OF 60" (1525mm) O.C.
- \* CERAMIC FIBRE STRIP INSTALLED TO ENVELOP THE TOP SURFACE AND BOTH OUTSIDE FACES (FLANGES) OF ALL LINER SUPPORT FRAMING.
- \* 24 GAUGE (0.61mm) MINIMUM LINER PANEL WITH MASTIC SEALER TAPE ON SEAM LINES AND ENDS, C/W TEK SCREWS AT 12" (305mm) O.C. AND STITCH SCREWS AT 12" (305mm) O.C.

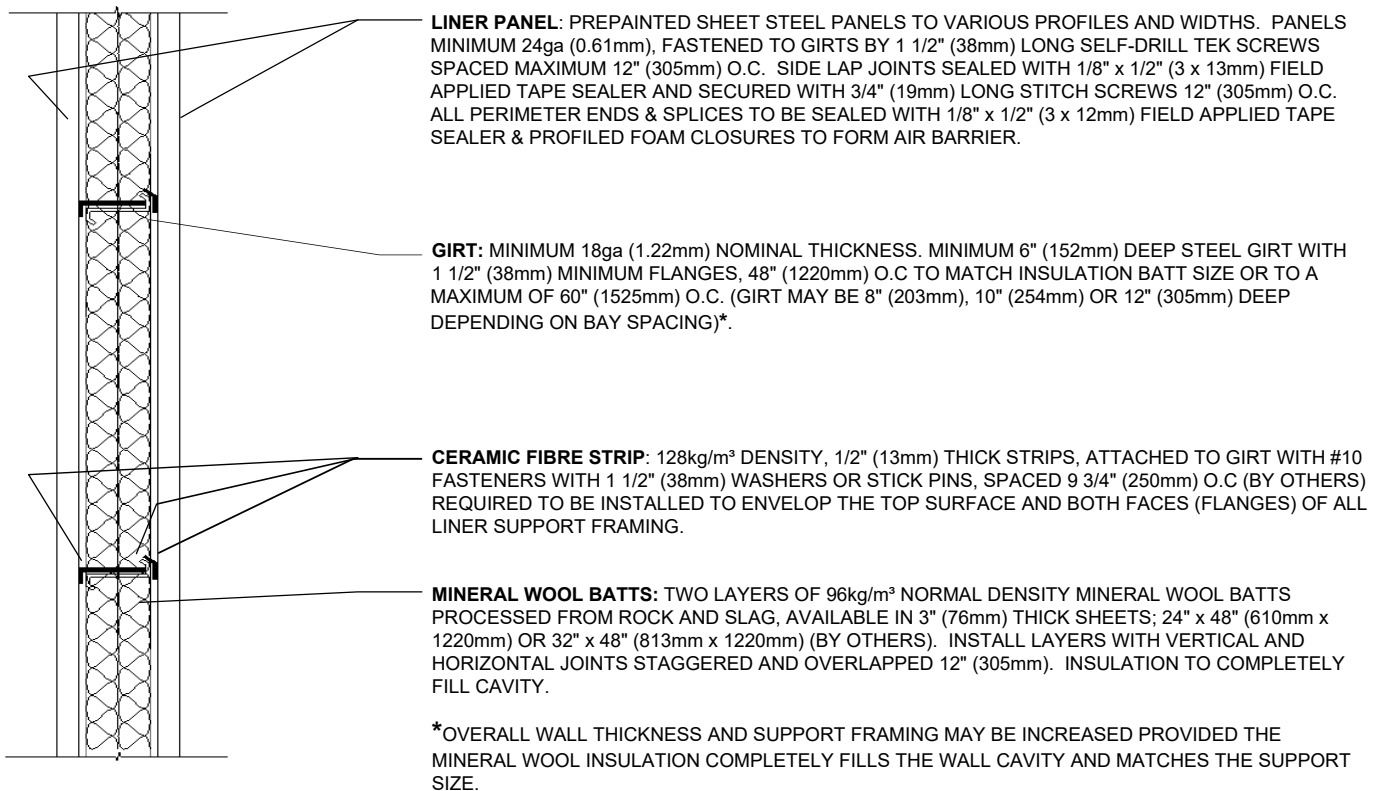
**TWO-HOUR FIRE RATED WALL ASSEMBLY (MEETS ULC DESIGN NO. W611)**

- \* 22 GAUGE (0.76mm) MINIMUM LINER PANEL WITH MASTIC SEALER TAPE ON SEAM LINES AND ENDS, C/W TEK SCREWS AT 12" (305mm) O.C. AND STITCH SCREWS AT 12" (305mm) O.C.
- \* GIRT STRUCTURAL SUPPORT MINIMUM 18ga (1.22mm) NOMINAL THICKNESS.
- \* GIRT SPACING OF 48" (1220mm) TO MATCH MINERAL WOOL BATT SIZE OR TO A MAXIMUM OF 60" (1525mm) O.C.
- \* CERAMIC FIBRE STRIP INSTALLED TO ENVELOP THE TOP SURFACE AND BOTH OUTSIDE FACES (FLANGES) OF ALL LINER SUPPORT FRAMING.
- \* 22 GAUGE (0.76mm) MINIMUM LINER PANEL WITH MASTIC SEALER TAPE ON SEAM LINES AND ENDS, C/W TEK SCREWS AT 12" (305mm) O.C. AND STITCH SCREWS AT 12" (305mm) O.C.

**NOTES:**

- See UL Product IQ BXUVC for other assemblies, including Design No. W605 1-h & W606 2-h for exterior walls, Design No. W447 for 1-h & 2-h Interior Drywall Partitions

**ONE-HOUR FIRE RATED PARTITION WALL ASSEMBLY (MEETS ULC DESIGN NO. W610)**



**TWO-HOUR FIRE RATED PARTITION WALL ASSEMBLY (MEETS ULC DESIGN NO. W611)**

