

**LEGEND - Nonbearing Wall**

**1-HOUR FIRE-RESISTANCE RATING - ULC W605**

Equivalent Opening Factor at 2 h ( $F_{EO}$ ) = 0.02

- 1) 26ga (0.46mm) EXTERIOR CLADDING
- 2) U CHANNEL OR GIRT SUPPORT
- 3) MINERAL WOOL INSULATION
- 4) GIRT STRUCTURAL SUPPORT
- 5) CERAMIC FIBRE STRIP
- 6) 24ga (0.61mm) LINER PANEL

**2-HOUR FIRE-RESISTANCE RATING - ULC W606**

- 1) 24ga (0.61mm) EXTERIOR CLADDING
- 2) U CHANNEL OR GIRT SUPPORT
- 3) MINERAL WOOL INSULATION
- 4) GIRT STRUCTURAL SUPPORT
- 5) CERAMIC FIBRE STRIP
- 6) 24ga (0.61mm) LINER PANEL

**THE FIREGUARD WALL SYSTEM IS BASED ON A ULC DESIGNATED NON-LOAD BEARING FIRE RATED WALL SYSTEM DESIGNED WITH THE STEEL CLADDING AND ENCLOSED MINERAL WOOL INSULATION TO PROVIDE 1- OR 2-HOUR FIRE RATED WALL. Testing based on CAN/ULC-S101-14-REV3 Standard Fire Endurance Tests of Building Construction Material.**

**ONE-HOUR FIRE RATED WALL ASSEMBLY (MEETS ULC DESIGN NO. W605)**

- \* 26 GAUGE (0.46mm) MINIMUM EXTERIOR WALL PANEL C/W TEK SCREWS AT 12" (305mm) O.C. AND STITCH SCREWS AT 12" (305mm) O.C.
- \* GIRT STRUCTURAL SUPPORT MINIMUM 18ga (1.22mm) NOMINAL THICKNESS.
- \* GIRT SPACING OF 48" (1220mm) TO MATCH MINERAL WOOL BATT SIZE OR TO A MAXIMUM OF 60" (1524mm) O.C.
- \* 1/2" (13mm) THICK CERAMIC FIBRE STRIP LOCATED ON OUTSIDE FACE (FLANGE) FOR ALL EXTERIOR CLADDING SUPPORT FRAMING.
- \* 24 GAUGE (0.61mm) MINIMUM FULL HEIGHT LINER PANEL WITH MASTIC SEALER TAPE ON SEAM LINES AND ENDS, C/W TEK SCREWS AT 12" (305mm) O.C. AND STITCH SCREWS AT 12" (305mm) O.C.

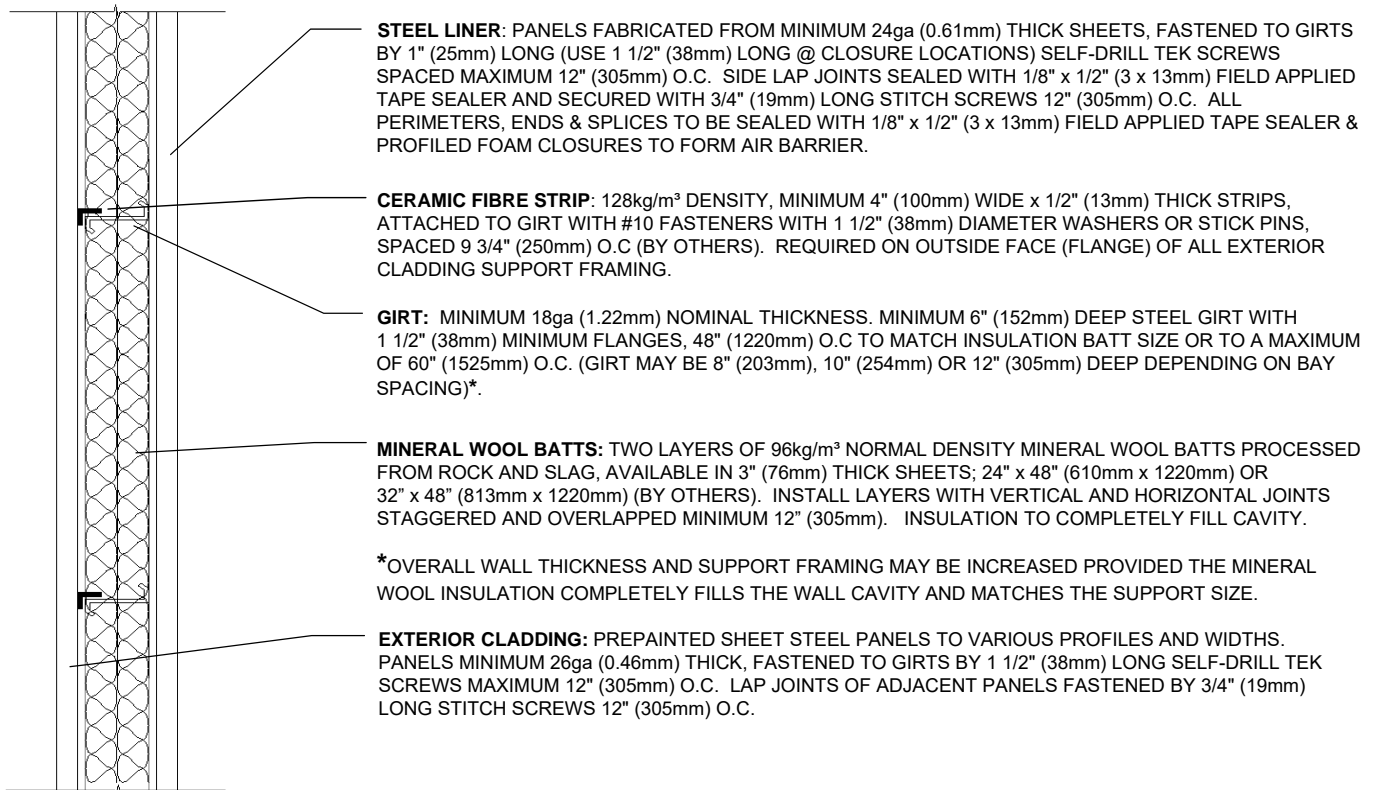
**TWO-HOUR FIRE RATED WALL ASSEMBLY (MEETS ULC DESIGN NO. W606)**

- \* 24 GAUGE (0.61mm) MINIMUM EXTERIOR WALL PANEL C/W TEK SCREWS AT 12" (305mm) O.C. AND STITCH SCREWS AT 12" (305mm) O.C.
- \* GIRT STRUCTURAL SUPPORT MINIMUM 18ga (1.22mm) NOMINAL THICKNESS.
- \* GIRT SPACING OF 48" (1220mm) TO MATCH MINERAL WOOL BATT SIZE OR TO A MAXIMUM OF 60" (1524mm) O.C.
- \* 1/2" (13mm) THICK CERAMIC FIBRE STRIP LOCATED ON OUTSIDE FACE (FLANGE) FOR ALL EXTERIOR CLADDING SUPPORT FRAMING.
- \* 24 GAUGE (0.61mm) MINIMUM FULL HEIGHT LINER PANEL WITH MASTIC SEALER TAPE ON SEAM LINES AND ENDS, C/W TEK SCREWS AT 12" (305mm) O.C. AND STITCH SCREWS AT 12" (305mm) O.C.

**NOTES:**

- Design No. W605 1-h can be used with an Equivalent Opening Factor at 2-h ( $F_{EO}$ ) = 0.02
- See CSSBI FPB-20: Fire Protection Bulletin #20: Fire-Rated Exterior Sheet Steel Walls & FPB-24: Fire Protection Bulletin #24: New (and Better) Limiting Distance Requirements in 1995 NBCC, for additional information on Limiting Distance Requirements for NBCC
- Thermal modeling of fire rated assemblies completed - See BEHLEN Energy Guide for Rigid Frame Steel Buildings. Thermal Effective U-Values performance based on published data by mineral wool suppliers.
- See UL Product IQ BXUVC for other assemblies, including bearing exterior walls; Design No. U418 & U425 and interior partitions; Design No. W610 1-h & W611 2-h

**ONE-HOUR FIRE RATED WALL ASSEMBLY (MEETS ULC DESIGN NO. W605)**



**TWO-HOUR FIRE RATED WALL ASSEMBLY (MEETS ULC DESIGN NO. W606)**

